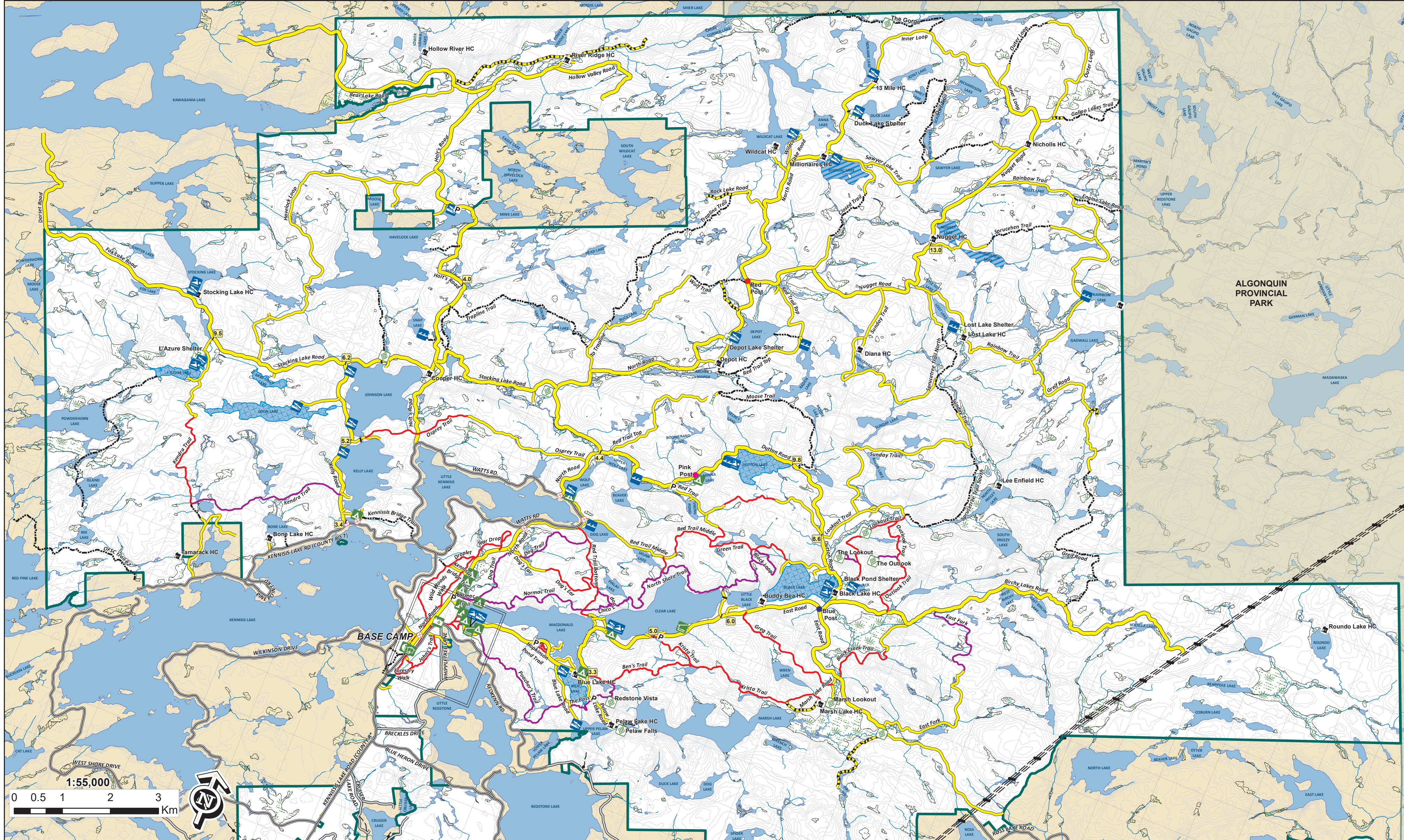
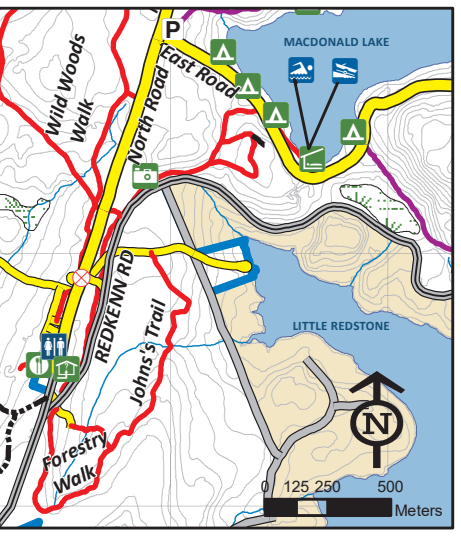


- I Trail Marker
- ⊗ Public Access Gate
- P Parking
- Blue Post
- Pink Post
- Red Post
- 🚤 Boat Launch
- 🚣 Canoe/ Kayak/ SUP Launch
- 🏊 Swimming Area
- 🏞 Scenic View
- 🏠 Research Tower
- 🏡 Day Use Picnic Area with Outhouse
- 🐺 Wolf Center
- 🍽 Restaurant
- 🏢 Main Office
- 🏠 Lakefront Cabin Rental
- 🏕 Campsite
- 🏠 Private Camp
- Public Road
- Public Road - Gravel
- Main Access - Gravel Road
- Secondary Access - Gravel Road
- Hiking or Difficult Mountain Bike Trail
- Walking or Moderate Mountain Bike Trail
- Unmaintained - Gravel Road
- Unmaintained
- 🌊 Brook Trout Reserve
- 🚫 Non-Motorized Lake
- 🌲 Haliburton Forest
- ⚡ Utility line

Please refer to our website [www.haliburtonforest.com](http://www.haliburtonforest.com) for grading descriptions. Hikers and bikers are encouraged to explore our property by staying on the trail and being self-sufficient... you are in a wilderness area.



ALGONQUIN PROVINCIAL PARK

1:55,000  
0 0.5 1 2 3 Km