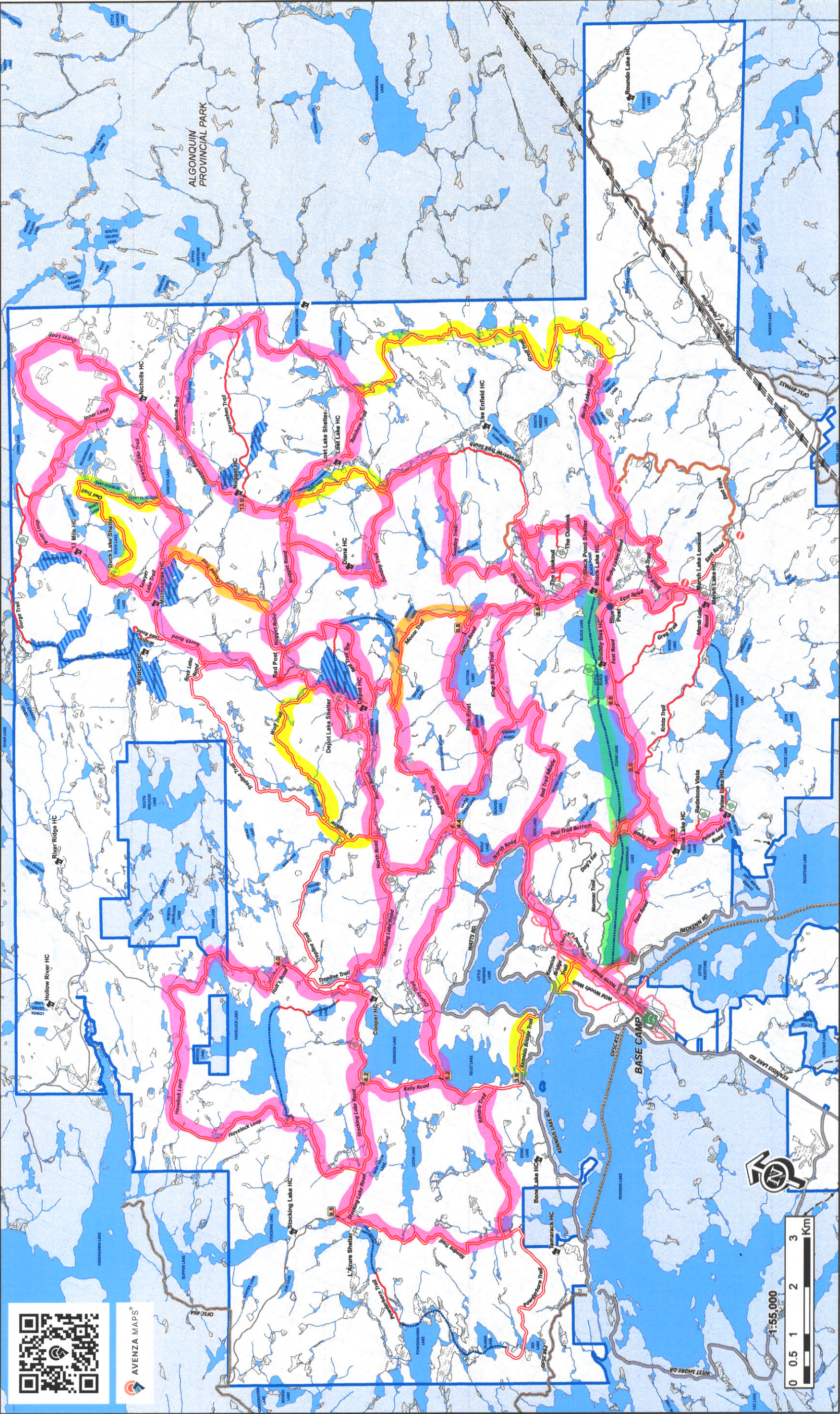




- No Entry
- Trail Marker
- Blue Post
- Pink Post
- Red Post
- Accommodation
- Gas Pump
- MacDonald Lake Rental Cabin
- Main Office
- Restaurant
- Wolf Center
- Scenic View
- Shelter Cabin
- EMS Landing
- Private Camp
- Trail Closed
- Snowmobile/ATV Lake Trail
- Snowmobile/ATV Double Track Trail
- Snowmobile/ATV Single Track Trail
- Snowshoe Trail
- Paved Road
- Unmaintained
- OFSC Trail
- OFSC Lake Trail
- Brook Trout Reserve
- Haliburton Forest
- Utility line

Please refer to our website for more information about safety requirements, trail conditions, and property access rules. All visitors are required to familiarize themselves with property access rules, drive carefully, pay attention to road/trail and weather conditions, remain on established roads/trails at all times, practice self-sufficiency, and remove any garbage. This is a wilderness area and your safety is your own responsibility!



- BIG GROOMER HAS BEEN THROUGH
- TRAIL CLEAR BUT ROUGH
- SMALL GROOMER HAS BEEN THROUGH
- STAKED LAKE CROSSING
- UNHIGHLIGHTED TRAILS REMAIN CLOSED